

S.E. 1/4 OF N.E. 1/4  
**SECTION 26, T.5N., R.1W., S.L.B.&M.**  
TOWN OF UINTAH & UINTAH DISTRICT

TAXING UNITS: 55, 58

SCALE 1" = 100'

SEE P. 101-1

PREFIX: 07-101  
ALSO SEE P. 101-3, 4

780

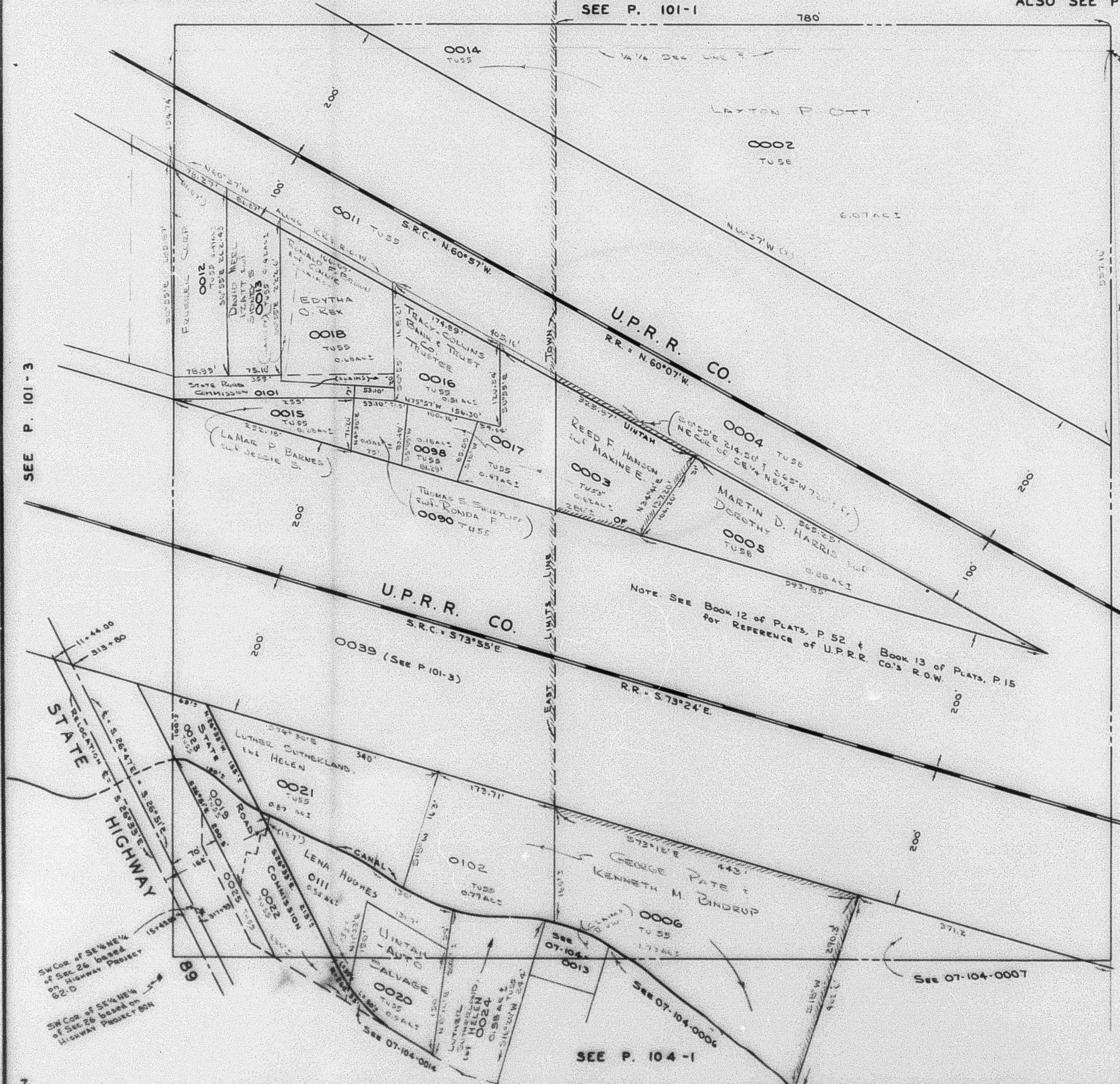
N.E. Cor. of  
SE 1/4 N.E. 1/4  
for some desc

PARCEL NOS.  
0002 to 0006  
0011 to 0025  
0090

0098  
0101 to 0103

SEE P. 101-3

SEE P. 100



NOTE SEE Book 12 of PLATS, P. 52 & Book 13 of PLATS, P. 15  
for REFERENCE of U.P.R.R. CO.'S R.O.W.

STATE HIGHWAY  
RELOCATION E = 5°26'41"E - 3.28°15'12"E  
11-44-00  
313+80

SW Cor. of SE 1/4 NE 1/4  
of Sec 26 based on  
97 Highway Project  
82-D

SW Cor. of SE 1/4 NE 1/4  
of Sec 26 based on  
Highway Project 80H

SEE P. 104-1

See 07-104-0007

See 07-104-0006

See 07-104-0014